

## Belzona Repairs to Cement Fan Shaft



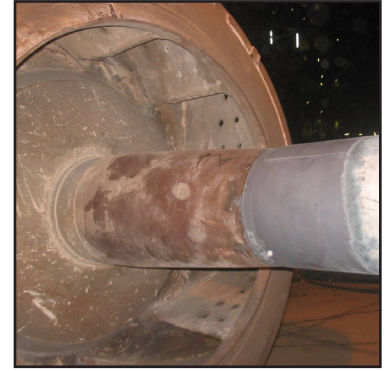
General view of the fan shaft



The worn out shaft



Form was applied



Application was completed

### STATISTICS

#### CUSTOMER

Cement manufacturer,  
Egypt

#### APPLICATION DATE

April 2005

#### SUBSTRATE

Steel

#### PRODUCTS

Belzona® 1311  
(Ceramic R-Metal)

#### APPLICATION SITUATION

Cement fan shaft.

#### PROBLEM

Deeply worn shaft due to abrasion from cement - leading to potential bearing failure.

#### APPLICATION METHOD

Application was carried out in accordance with Belzona® Know-How System Leaflet MPT-2.

#### BELZONA FACTS

The dimension of the shaft was restored and the repair was completed without machining. A conventional repair method to repair this shaft was not a favorable option due to the high costs of welding and machining in addition to the large fan that cannot be separated from the shaft.